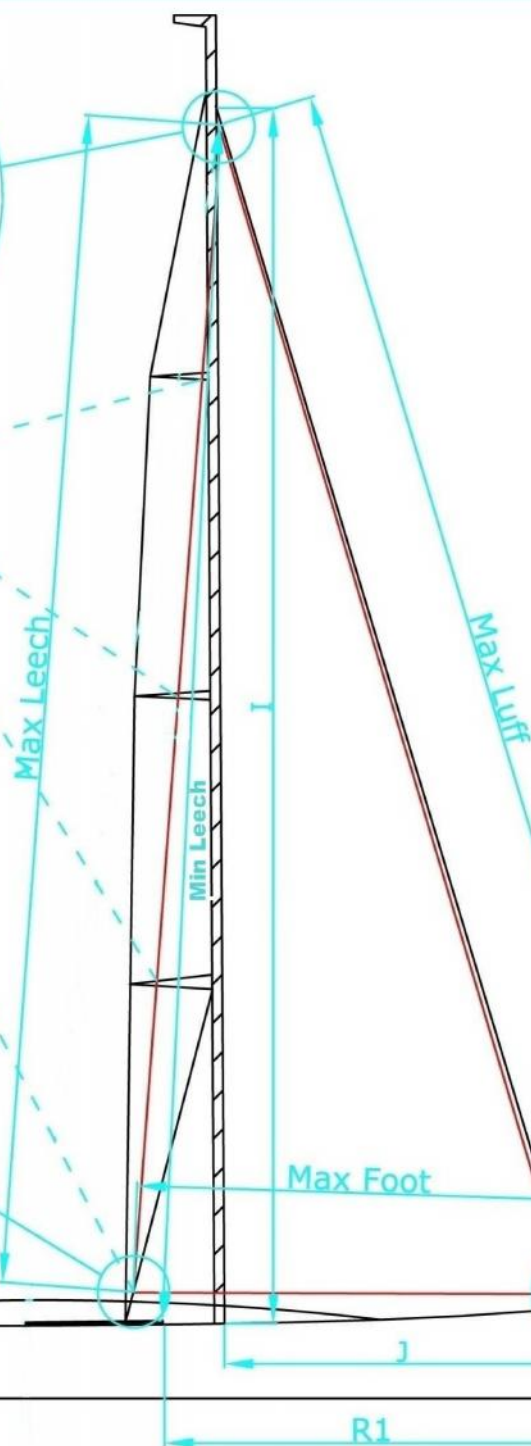
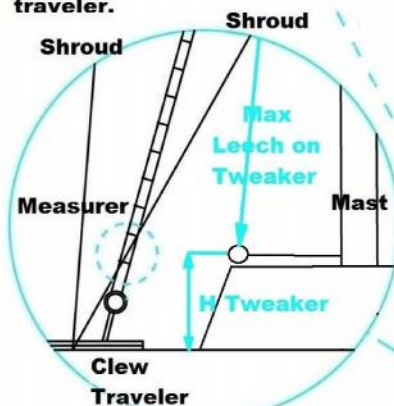
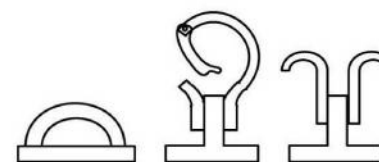


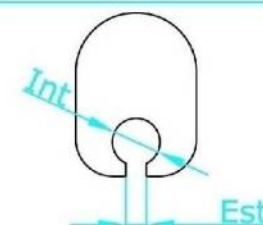
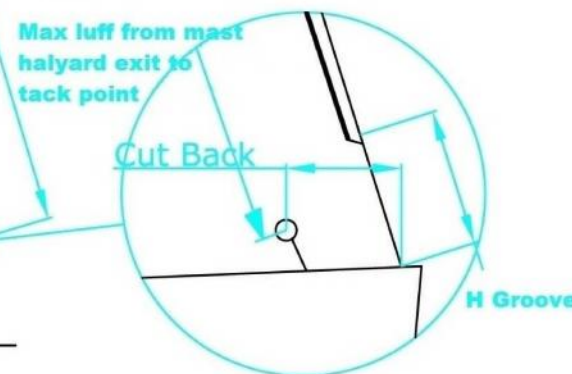
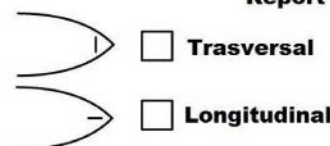
Measuring max leech:
Fix the measurer edge to the jib halyard and hoist it to the top. Place the measurer towards the jib track until the measurer slightly touches spreaders and/or the lower diagonal shroud. Then place the traveler on that point and measure from halyard exit to the upper part of the clew traveler.



Max Luff From mast halyard exit to tack point	
Max Foot From tack point to clew traveler	
Max Leech From halyard exit to clew traveler	
Max Leech with Tweaker From halyard exit to tweaker	
H Tweaker From deck to tweaker	
Cut Back From tack point to luff groove	
H Groove From tack point to luff groove	
Min Leech From mast halyard exit to front track end	
R1 From forestay fixing point to front track end	



Report tack point type



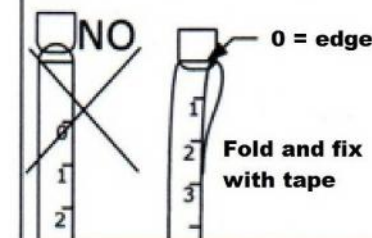
Int	
Est	
I	
J	

When measuring the max leech, the measurer touches:

- ☐ the lower shroud but not the lower spreader
- ☐ the lower shroud and the lower spreader

How to use the measurer

Dimensions has to be reported from the 0. If the 0 is not coinciding with the edge, fold the measurer on itself until the 0 lays on the edge and fix it with some tape.



B SAILS

Jib Form