



CARBON/DYNEEMA



All our products are totally customisable by choosing among any fiber, skin and grid. Shown data represent recommendations provided according to our experience and fibers technical features.



Double internal taffeta - black

Type:

CARBON/DYNEEMA

Available skins:

double internal/external taffeta
Structural Skin

Suggested grid:

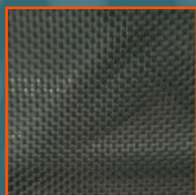
black Aramid

Available fibers:

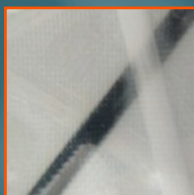
balanced mix of Carbon and Dyneema

Our suggestions:

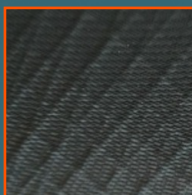
upwind sails
big offshore racer/cruiser



Double external taffeta grey



Internal taffeta white



External taffeta black



Visit the products page on our website

Type CARBON/DYNEEMA Skins: Double ext. Taffeta - white