

# ~~B2~~ B SAILS

*fast laminates & sailcloth*

THE **B2B** EUROPEAN SAILMAKER



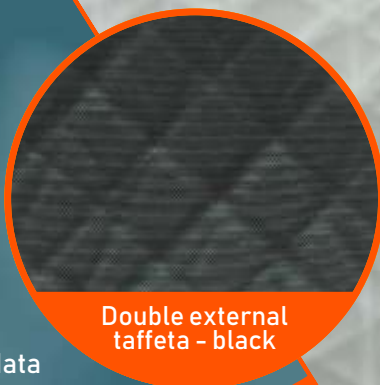
THE  
SAMPLES BOOK



## DYNEEMA



All our products are fully customizable, you can choose any combination of fiber, skin and grid. Shown data are our suggestions, based on our experience and fibers technical features.

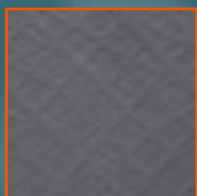


Double external taffeta - black

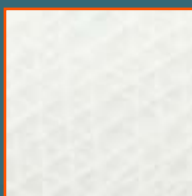
Type: **DYNEEMA**  
Available skins: double internal/external taffeta  
Structural Skin  
Suggested grid: Dyneema  
Available fibers: Dyneema  
Our suggestions: upwind, downwind sails  
big offshore cruiser over 60ft



Double internal taffeta black



Double external taffeta grey



Double external taffeta white



Visit the products page on our website

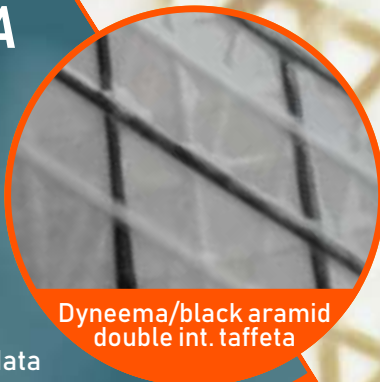
Type DYNEEMA Skins: Double external taffeta - grey



## ARAMID/DYNEEMA



All our products are fully customizable, you can choose any combination of fiber, skin and grid. Shown data are our suggestions, based on our experience and fibers technical features.



Dyneema/black aramid  
double int. taffeta

Type:

ARAMID/DYNEEMA

Available skins:

double internal/external taffeta  
Structural Skin

Suggested grid:

Aramid (black/yellow)

Available fibers:

balanced mix of Aramid (black/yellow)  
and Dyneema

Our suggestions:

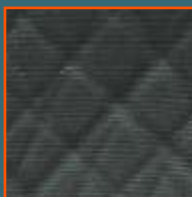
upwind, downwind sails  
big offshore cruiser



Double internal taffeta  
black



Double external taffeta  
white



Double external taffeta  
white



Visit the products page  
on our website

Type ARAMID/DYNEEMA  
Skins: Double external taffeta



## CARBON/DYNEEMA



All our products are fully customizable, you can choose any combination of fiber, skin and grid. Shown data are our suggestions, based on our experience and fibers technical features.



Double internal taffeta - black

Type:

**CARBON/DYNEEMA**

Available skins:

double internal/external taffeta  
Structural Skin

Suggested grid:

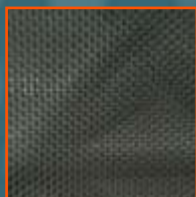
black Aramid

Available fibers:

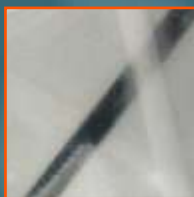
balanced mix of Carbon and Dyneema

Our suggestions:

upwind sails  
big offshore racer/cruiser



Double external taffeta  
grey



Internal taffeta white



External taffeta black



Visit the products page  
on our website

Type CARBON/DYNEEMA Skins: Double ext. Taffeta - white





## CARBON/ARAMID



All our products are fully customizable, you can choose any combination of fiber, skin and grid. Shown data are our suggestions, based on our experience and fibers technical features.



Carbon/black aramid

Type:

**CARBON/ARAMID**

Available skins:

film on film (mylar)  
internal/external taffeta  
Structural Skin

Suggested grid:

black/yellow Aramid

Available fibers:

balanced mix of black/yellow Aramid and Carbon

Our suggestions:

upwind sails  
medium/big racer and racer-cruiser  
medium to large fast cruisers with carbon mast.

Type CARBON/ARAMID Skins: Double external taffeta



Film on film  
Carbon/black aramid



Internal Structural  
Skin black



Internal taffeta white



Visit the products page  
on our website

## CARBON



All our products are fully customizable, you can choose any combination of fiber, skin and grid. Shown data are our suggestions, based on our experience and fibers technical features.



Carbon

Type:

Available skins:

**CARBON**

film on film (mylar)

internal/external taffeta

Structural Skin

Suggested grid:

black Aramid

Available fibers:

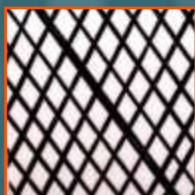
balanced mix of black Aramid and Carbon

Our suggestions:

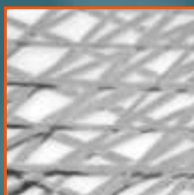
upwind sails

medium/big racer and racer-cruiser

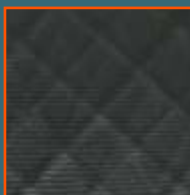
Type CARBON Skins: Double external taffeta



Internal Structural Skin  
white



Internal taffeta white



External taffeta black

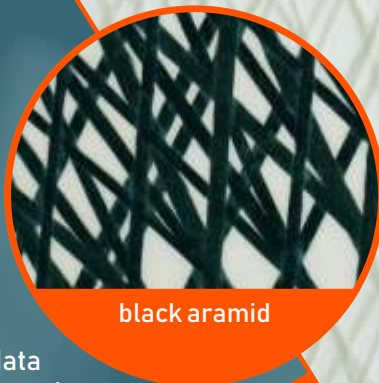


Visit the products page  
on our website

## ARAMID



All our products are fully customizable, you can choose any combination of fiber, skin and grid. Shown data are our suggestions, based on our experience and fibers technical features.



black aramid

Type:

**ARAMID**

Available skins:

film on film (mylar)  
Internal/external taffeta  
Structural Skin

Suggested grid:

yellow/black Aramid

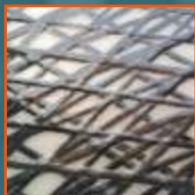
Available fibers:

yellow/black Aramid

Our suggestions:

upwind, downwind sails  
medium/big racer and racer-cruiser

Type ARAMID Skins: Double external taffeta



Internal taffeta white  
black aramid



Double external taffeta  
black aramid



Film on film  
yellow aramid



Visit the products page  
on our website

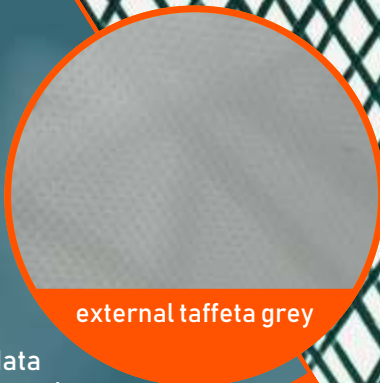




## POLYESTER



All our products are fully customizable, you can choose any combination of fiber, skin and grid. Shown data are our suggestions, based on our experience and fibers technical features.



external taffeta grey

Type:

**POLYESTER**

Available skins:

film on film (mylar)  
internal/external taffeta

Suggested grid:

Polyester

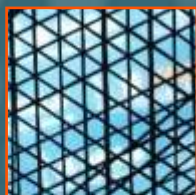
Available fibers:

high modulus Polyester

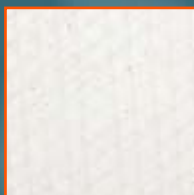
Our suggestions:

upwind, downwind sails  
small racer and racer-cruiser (film on film skins)  
small to Medium cruisers (taffeta skins)

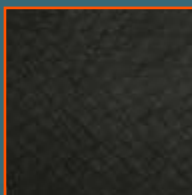
Type POLYESTER Skins: Double external taffeta



Film on film  
black polyester



Double external taffeta  
white polyester



External taffeta black  
polyester



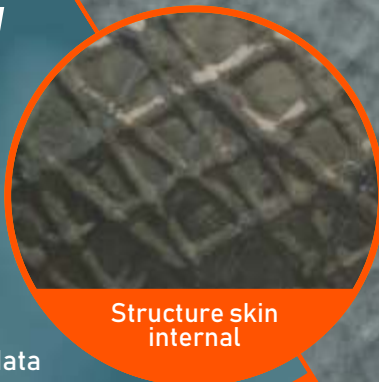
Visit the products page  
on our website



## STRUCTURAL SKIN

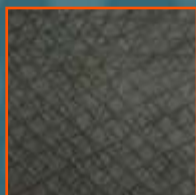


All our products are fully customizable, you can choose any combination of fiber, skin and grid. Shown data are our suggestions, based on our experience and fibers technical features.

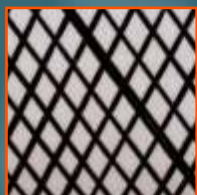


Structure skin  
internal

Type:	<b>STRUCTURAL SKIN</b>
Skin:	structural skin (internal or external)
Suggested grid:	black Aramid
Fibers:	all types. Our suggestion: balanced mix of Carbon and Dyneema or black Aramid
Our suggestions:	upwind sails medium/big racer and racer-cruiser medium to big cruisers



Internal structural skin  
dark



External structural skin  
white



Double internal  
structural skin

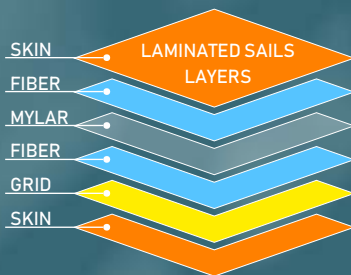


Visit the products page  
on our website

Type **STRUCTURAL SKIN** Skin: external

## **B SAILS** *FASTLAMINATES* means:

- Lower elastic deformation for faster sails;
- less stress for the boat's structures;
- european commercial guarantee;
- high pressure and temperature laminating process;
- bicomponent resin for lighter laminates and not reversible crosslinking process;
- long post-cure period;
- ideal for race and cruise, from dinghy to mega yachts over 100ft.



### ■ SKINS - available materials:

- Mylar
- Taffeta (internal or external, single or double)
- Structural Skin (internal or external)

### ■ FIBER LAYERS:

- Polyester
- Aramid
- Carbon
- Dyneema

### ■ GRID - available fibers:

- Polyester
- Aramid
- Dyneema

■ MYLAR LAYER (yachts over 80ft)  
for double-lamination only

## **B SAILS** *FASTLAMINATES* can be sold under the following steps:

- step 1) **SO** (Skin Only): sail sold in separate boxes
- step 2) **S00P** (Skin Only One Piece): step 1 with boxes bonded (external film) or seamed (external taffeta)
- step 3) **SO+** (Skin Only +): step 1 plus precutted corners and reef patches
- step 4) **S00P+** (Skin Only One Piece +): step 2 plus seamed or glued corners and reef patches
- step 5) **CS** (Complete Sail): finished sail without bag, battens, slides and special hardware.

